

APPLICATION

For smaller Terminal Units, suitable for remote mounting, with 80mm centres. Includes the Automatic Balancing Valve and all components required to flush the Terminal Unit and purge, vent and automatically balance the system.

In order for the ABV to function as intended, water must always be suitably treated, clean, free of debris and maintained as per the relevant water quality standards (VDI2035, BSRIA BG50 or equivalent).

SPECIFICATION

Static Pressure:	25 Bar
Working Temperature:	-10°C to 120°C
Size Range:	DN15-25
Connections:	Standard fixed ISO female.
Features:	<ul style="list-style-type: none"> • Easy selection based on flow rate • Wide choice of air vents and strainers • Blank cap option for dynamic back flushing • Accurate flow measurement verification at the terminal unit • Flush/drain points in flow and return • Supplied set, individually labelled to schedule & terminal unit, ready to fit • 100% tested
Components:	<ul style="list-style-type: none"> • FlowCon 5-position flushing bypass, 80mm centres, with extended handles and 2 3-Way flushing valves • FlowCon or VIR venturi metering station low to high flow rates, fitted with Flow-Con Combined PT Plug & Drain • FlowCon E-Just or ABV1.Y.Y fitted with FlowCon Combined PT Plug & Drain • Johnson Controls 4-Port Valve with 3-point floating or modulating Actuator
Material:	<ul style="list-style-type: none"> • [DZR] forged brass, stainless steel, elastomers EPDM

PRODUCT CODES AND SELECTIONS

A2.0.15-3.12.12.T.6.Y.J

J = Johnson Controls 4-Port (Standard)

Q = Free-Issued 4-Port

U = 0.25 Kv 4-Port

V = 0.4 Kv 4-Port

W = 0.63 Kv 4-Port

X = 1.0 Kv 4-Port

Y = 1.6 Kv 4-Port

Z = 2.5 Kv 4-Port

5 = Composite ABV1.Y.Y 0.0081-0.0431 l/s [20-130 kPaD]

6 = E-Just1.Y.B - 0.0278-0.114 l/s [17-210 kPaD]

7 = E-Just1.Y.G - 0.0436-0.169 l/s [17-210 kPaD]

8 = E-Just1.Y.R - 0.0767-0.229 l/s [17-200 kPaD]

9 = E-Just1.G.R - 0.113-0.352 l/s [30-400 kPaD]

10 = E-Just2.Y.G - 0.149-1.62 l/s [17-400 kPaD]

T = Threaded

P = Press Fit

C = Compression

12 = 1/2"

34 = 3/4"

1 = 1"

15 = 15mm

22 = 22mm

0 = no additional flow measurement

15-xR = Metering Station in the return

15-1 = Kvs 0.263 [for ABV1.Y.Y]

15-2 = Kvs 0.550 [for ABV1.Y.Y/E-Just1.Y.B]

15-3 = Kvs 1.15 [for E-Just1.Y.B]

15-4 = Kvs 2.80 [for E-Just1.Y.B/Y.G/1.Y.R]

15-5 = Kvs 5.40 [for E-Just1.Y.R/G.R]

6 = Kvs 13.61 [for E-Just2.Y.G]

0 = no addition to the flow branch

1 = Strainer

3 = Combined PT Plug & Hose Union Drain Valve

4 = Hose Union Drain Valve

6 = Strainer & Combined PT Plug & Hose Union Drain Valve

7 = Strainer & Hose Union Drain Valve

9 = Strainer w Plug&Gasket and Combined PT Plug&Drain

11 = Strainer w 2 PT Plugs

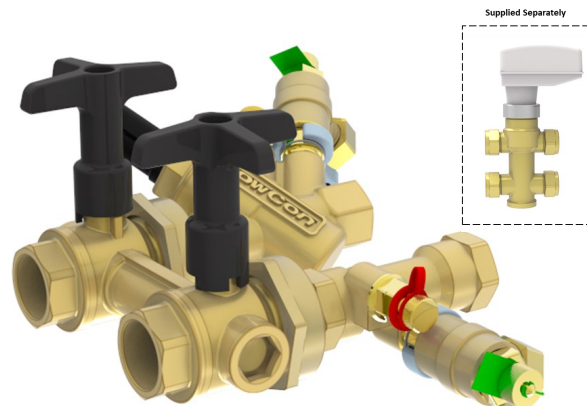
12 = Strainer w PT Plug & Combined PT Plug&Drain

2 Union Bypass ABV FloSet 80mm centres

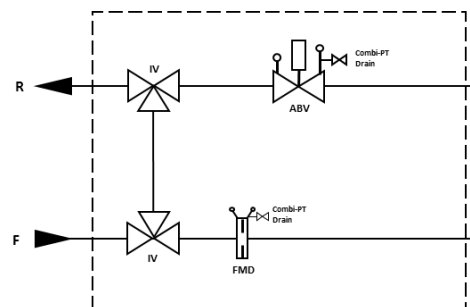
FloSet® 80

A2.0.15-3.12.12.T.6.Y.J

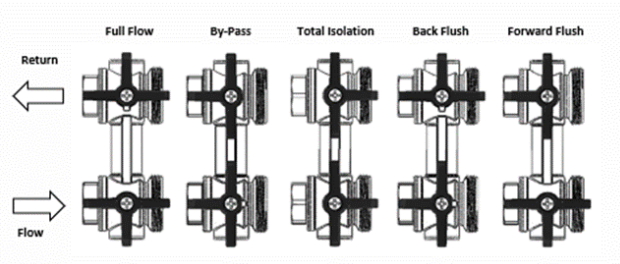
FloSet 80 comprising 2 Union By-Pass with 2 three-way Isolating Valves. MS.15-3 Metering Station fitted with Combined PT Plug & Drain to the flow branch; E-Just1.Y.B ABV fitted with PT Plug and Combined PT Plug & Drain to the return branch. 1/2" Female Threaded Inlet and Outlet Connections. Complete with separately supplied Johnson Controls 4-Port [1.60] Valve with Compression Connections



Configuration Schematic



Bypass handle positions supporting 5 functions



Dimensional Drawing

Product Code	Size	ABV	Dimensions	
			A	B
A2.0.15-x.12.12.T.x	DN15	ABV1.Y.Y	150mm	150mm
A2.0.15-5.34.34.T.x	DN20	E-Just.1	150mm	150mm
A2.0.6.1.1.T.10	DN25	E-Just.2	180mm	170mm

