

### APPLICATION

To manually balance a Fan Coil Unit installation in a Constant Flow System. Suited for small spaces and slim-line Fan Coil Units. Supports dynamical forward-flushing of the terminal unit.

In order for the valve to function as intended, water must always be suitably treated, clean, free of debris and maintained as per the relevant water quality standards (VDI2035, BSRIA BG50 or equivalent).

### SPECIFICATION

**Static Pressure:** 25 Bar  
**Working Temperature:** -10°C to 120°C  
**Size Range:** DN15-20  
**Connections:** System side: male or fixed ISO female. FCU side: compression.

**Features:**

- Handed for heating & cooling duties
- Easy selection based on flow rate and pressure drop
- Wide choice of connections
- Strainer options
- Accurate flow measurement verification at the terminal unit
- Flush/drain points in flow and return\*
- Vertical or horizontal orientation
- Supplied set, individually labelled to schedule & terminal unit, ready to fit
- 100% tested

**Components:**

- FlowCon 5-position flushing bypass, 40mm centres
- FlowCon Combined PT Plug & Drain
- VIR 9515 Commissioning Valve, fitted with FlowCon Combined PT Plug & Drain

**Material:**

- Forged DZR brass, elastomers EPDM

### PRODUCT CODES AND SELECTIONS

CR.0.1.12.15.C.V

<b>4 Port Size:</b>	V = 0.4 [Kv] W = 0.63 [Kv] X = 1.0 [Kv] Y = 1.6 [Kv] Z = 2.5 [Kv]
<b>Unit Connection Type:</b>	S = Solder C = Compression
<b>Connection Size:</b>	15(l) = 15mm unit connection (included) 22(l) = 22mm unit connection (included)
<b>System [Inlet]:</b>	12 = ½" female threaded connections 34 = ¾" female threaded connections No addition = male threaded bypass with ¾" BSP Euroconus connections
<b>Commissioning Valve:</b>	1 = 15LXF Kvs 0.263 Commissioning Valve 2 = 15ULF Kvs 0.55 Commissioning Valve 3 = 15LF Kvs 1.15 Commissioning Valve 4 = 15 Kvs 2.80 Commissioning Valve 5 = 20 Kvs 5.33 Commissioning Valve
<b>Flow Branch Addition:</b>	0 = no addition to the flow branch 1 = plain strainer 3 = combined PT Plug & Hose Union Drain Valve 4 = Hose Union Drain Valve 6 = Plain Strainer and Combined PT Plug & Hose Union Drain Valve 7 = Plain Strainer & Hose Union Drain Valve 9 = Strainer with 1 Plug & Gasket and 1 Combined PT Plug & Drain 11 = Strainer with 2 PT Plugs 12 = Strainer with 1 PT Plug+Combined PT Plug & Drain
	CL = Left Handed FloSet CR = Right Handed FloSet CH = Horizontal FloSet

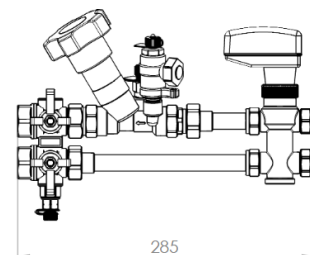
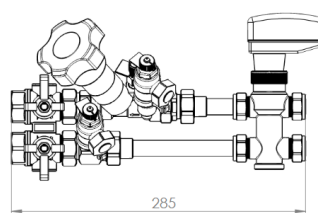
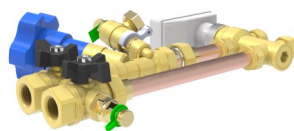
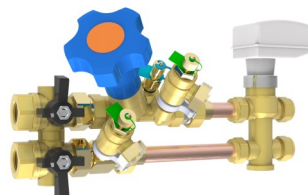


CR.3.3.12.15.C.V

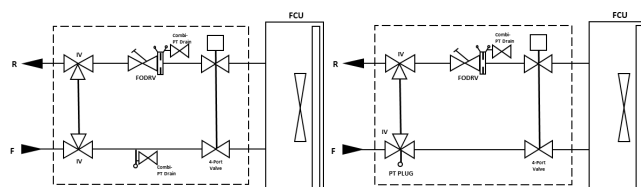
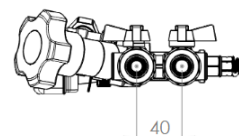
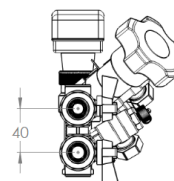
Right Hand FloSet 4-Port. Combined PT Plug & Drain to the Flow Branch. 15 LF 1.15 Commissioning Valve to the Return Branch. Complete with ½" threaded connections.

Vertical Configuration

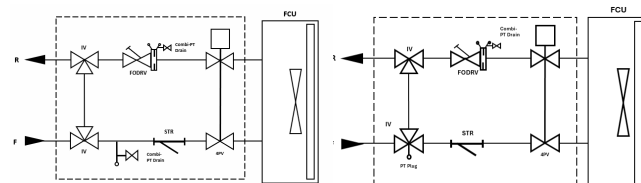
Horizontal Configuration



\*Flush/drain point in the flow redundant due to the horizontal orientation.



With optional strainer



Bypass handle positions supporting 5 functions

