

### APPLICATION

For smaller Terminal Units, suitable for remote mounting, with 80mm centres. Includes the PICV and all components required to flush the Terminal Unit and purge, vent, automatically balance the system and control the temperature at the Terminal Unit with 100% authority. In order for the PICV to function as intended, water must always be suitably treated, clean, free of debris and maintained as per the relevant water quality standards (VDI2035, BSRIA BG50 or equivalent).

### SPECIFICATION

- Static Pressure:** 25 Bar
- Working Temperature:** -10°C to 120°C
- Size Range:** DN15-25
- Connections:**
- Standard fixed ISO female, DN15/20/25 union.
- Features:**
- Easy selection based on flow rate
  - Wide choice of air vents, strainers and actuators (electric or thermic, raise lower, modulating, on/off, feedback)
  - Blank cap option for dynamic back flushing
  - Accurate flow measurement verification at the terminal unit
  - Flush/drain points in flow and return
  - Supplied set, individually labelled to schedule & terminal unit, ready to fit
  - 100% tested
- Components:**
- FlowCon 5-position flushing bypass, 80mm centres, with extended handles and 2 3-Way flushing valves
  - FlowCon or VIR venturi metering station low to high flow rates, fitted with FlowCon Combined PT Plug & Drain
  - FlowCon Green or GreEQ PICV fitted with FlowCon Combined PT Plug & Drain
  - FlowCon FNP Actuator, can be set to equal % or linear control, with failsafe, electrical override and position indicator. IP54 rated, including upside-down.
- Material:**
- DZR brass, elastomers EPDM

### PRODUCT CODES AND SELECTIONS

P2.0.15-x.12.12.T.0.x

AAV = Automatic Air Vent  
MAV = Manual Air Vent

GreEQ.0 [0.00482—0.126 l/s]  
GreEQ.1 [0.00482—0.126 l/s]  
Green.0 [0.0103—0.160 l/s]  
Green.1 [0.178—0.308 l/s]  
Green.1HF [0.172—0.736 l/s]

T = Threaded

12 = 1/2"  
34 = 3/4"  
1 = 1"

0 = no additional flow measurement  
15-xR = Metering Station in the return  
15-1 = Kvs 0.263 [for GreEQ.0/Green.0]  
15-2 = Kvs 0.550 [for Green.0]  
15-3 = Kvs 1.15 [for Green.0]  
15-4 = Kvs 2.80 [for GreEQ.1/Green.1]  
15-5 = Kvs 5.40 [for Green.1HF]  
6 = Kvs 13.61 [for Green.2]

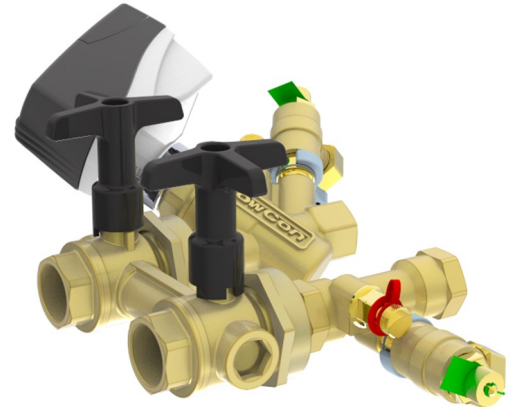
0 = no addition to the flow branch  
1 = Plain Strainer  
3 = Combined PT Plug & Hose Union Drain Valve  
4 = Hose Union Drain Valve  
6 = Plain Strainer and Combined PT Plug & Hose Union Drain Valve  
7 = Plain Strainer & Hose Union Drain Valve  
9 = Strainer with 1 Plug & Gasket and 1 Combined PT Plug & Drain  
11 = Strainer with 2 PT Plugs  
12 = Strainer with 1 PT Plug and Combined PT Plug & Drain

2 Union Bypass PICV FloSet 80mm centres

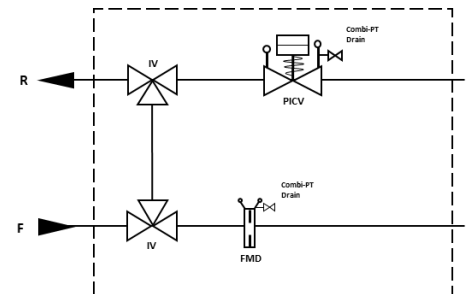
# FloSet® 80

P2.0.15-x.12.12.T.0.x

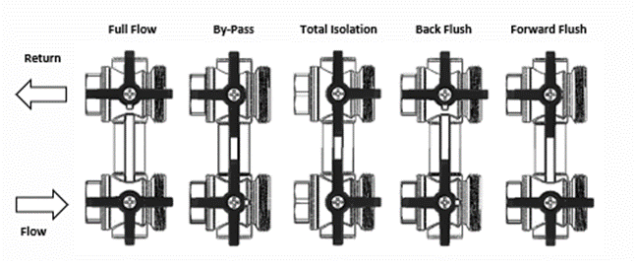
FloSet 80 comprising 2 Union By-Pass with 2 three-way Isolating Valves. MS.15-2 Metering Station fitted with Combined PT Plug & Drain to the Flow Branch. Green.0 PICV fitted with PT Plug and Combined PT Plug & Drain to the Return Branch. 1/2" Female Threaded System and Outlet Connections. FNP Actuator supplied loose.



Configuration Schematic



Bypass handle positions supporting 5 functions



Dimensional Drawing

Product Code	Size	PICV	Dimensions	
			A	B
P2.0.15-x.12.12.T.x	DN15	Green/EQ.0/1	150mm	150mm
P2.0.15-x.34.34.T.1HF	DN20	Green.1HF	150mm	150mm
P2.0.6.1.1.T.1HF	DN25	Green.1HF	160mm	170mm
P2.0.6.1.1.T.2	DN25	Green.2	180mm	170mm

